

# Westlands

## Key information including fees



Requires improvement

Last rated:  
22 March 2023



Free WiFi at this home

Tash Stevens

Home Manager



Valid from 1st April 2024

### Fees for this home



Residential care rate (per week)

£1146



Dementia/advanced residential care rate (per week)

£1319



Additional supplements (per week - if applicable)

Premium room £215  
Ensuite £37



Fees are payable one month in advance on the first day of each month, usually by standing order. Fees are reviewed annually and will usually rise by no more than 2.0% above the percentage increase in National Living Wage (except in exceptional circumstances)

### How fees compare with other providers locally



As a guide, other providers' fees for residential and dementia care homes (older people) in Rugby range from approximately £1,100 to £1,700 per week\*

### Funding type accepted at this home



Socially funded e.g. local authority



Privately funded e.g. your own funds



CHC or similar



### What's included in your weekly fee

#### Services including...

- room accommodation
- heating and lighting
- laundry services
- access to TV and sitting rooms
- food
- non-alcoholic drinks
- snacks

#### Personal care including...

- care and support from staff
- use of aids and appliances available in the home such as hoists, lifts and occasional use wheelchairs



### Lifestyle services paid for separately

#### Typical services paid for separately include...

- daily papers
- hairdressing charges
- clothing
- dry cleaning
- personal toiletries
- meals for your visitors
- chiropody
- costs of special outings and events
- private healthcare not covered by the NHS
- travel costs e.g. public or private transport to medical appointments

## Summary of key information

### Key features at Westlands - Oliver Street, Rugby, CV21 2EX

Westlands is home for up to 41 older people and people living with dementia, providing residential care and short-term respite care. It typically has a staffing ratio of one member of staff to five residents. Facilities at the home include:



Single rooms



Ensuite facilities in some rooms



Household kitchen



Communal lounge & TV



Lift to each floor



Hair salon



Cafe



Conservatory



Gardens



Patio area



Memory Maker minibus



On-site parking



Close to local amenities



On a bus route

At every WCS Care home:



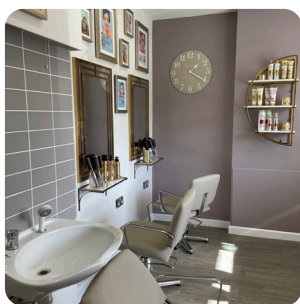
Electronic care planning



Relatives' Gateway



Free WiFi



## What people say about Westlands

THIS IS TO CERTIFY THAT  
Westlands

HAS A CAREHOME.CO.UK  
REVIEW SCORE OF

9.3

March 2024

Maximum Review Score is 10, and the Score was calculated from 9 Reviews made by residents or family/friends of residents.

### Reviews on our website

★★★★★

7 Dec 2023

My mum's granddaughter recently passed away while I was out of the the country. Westlands Care Home...

Glenna W (Daughter of Resident)

★★★★☆

17 Oct 2023

The care given to my mother-in-law is so far excellent. They look after her very well, she is happy...

Debra S (Daughter-in-law of Resident)

★★★★☆

17 Oct 2023

My mom has been in Westlands for 6 months and the overall experience has been very positive. The...

Martin S (Son of Resident)

carehome.co.uk



As at 5 March 2024 - find more reviews for Westlands at carehome.co.uk

## Important terms and conditions

### Deposits including damage charges

We do not require an upfront deposit. We also won't charge a fee to replace carpets or redecorate your room if you vacate it (known as a dilapidation fee).

### Running out of private funding

We'll support privately-funded residents to apply for social funding, if their financial situation means they can no longer meet the requirements for privately-funded care, so we will not ask residents to move out.

### Notice conditions

If you wish to end your contract with us, please notify the home manager in writing with these notice periods: within 14 days of signing the contract (immediately); before your six-week trial ends (at least 7 days); after your six-week trial (at least four weeks).